



4UB UPRIGHT BIKE

The 4-Series cardio line from Star Trac® is the perfect solution for the hospitality and multi-housing markets. With premium full color flat panel displays, quick select adjustment keys, and optional personal viewing screen, the 4 series provides smaller facilities with the look and performance of a full commercial product.

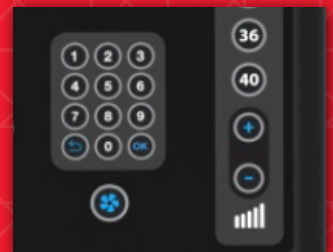
- Full color flat panel LCD display creates a premium user experience
- Quick Key selects for level allow for one-touch changes on the fly
- Walk-through design and intuitive wrap-around seat adjust allow users to access and change seat position with ease
- Contact and telemetry heart rate
- Integrated USB port provides charging capability for user devices
- Star Trac's popular personal fan for comfort
- Electrical requirements: unit can be operated self-generating or plugged in; PVS option requires 12V/5 Amp power supply
- 40 levels of resistance
- Powder-coated Steel frame

Available at **IRON COMPANY®**

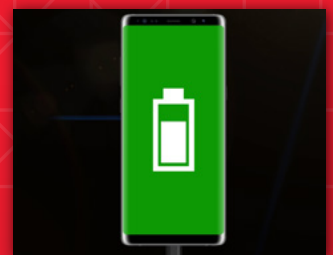
FEATURES



FULL COLOR FLAT PANEL LCD DISPLAY CREATES A PREMIUM USER EXPERIENCE



QUICK KEY SELECTS FOR LEVEL ALLOW FOR ONE-TOUCH CHANGES ON THE FLY



INTEGRATED USB PORT PROVIDES CHARGING CAPABILITY FOR USER DEVICES



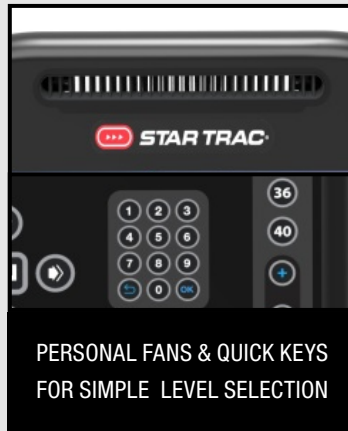
CONTACT AND TELEMETRY HEART RATE

PRODUCT SPECS



4UB Upright Bike	
Primary SKUs	9-3190-MUNBP0
Weight	212 lb (96 kg)
Width	26" (66 cm)
Length	66" (168 cm)
Height	53" (135 cm)
User Weight Capacity	350 lbs (159 kg)

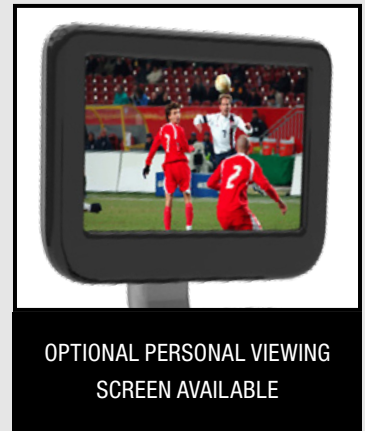
CONSOLE FEATURES



PERSONAL FANS & QUICK KEYS
FOR SIMPLE LEVEL SELECTION



COMPATIBLE WITH ECOFIT®
ASSET MANAGEMENT SOLUTIONS



OPTIONAL PERSONAL VIEWING
SCREEN AVAILABLE

THE BRANDS MEMBERS ASK FOR BY NAME

Core Health & Fitness is the world's largest marketer and distributor of commercial fitness solutions, offering top brands for every category. Our purpose is to innovate by sharing our passion for fitness performance.

CORE

HEALTH & FITNESS



©2019 Core Health & Fitness LLC. All rights reserved. Star Trac, the Star Trac logo and StairMaster are registered trademarks of Core Health & Fitness, LLC. Schwinn and Nautilus are registered trademarks of Nautilus Inc. used under license to Core Health & Fitness LLC.

For more information or to purchase the Star Trac 4RB 4 Series Recumbent Bike visit www.ironcompany.com